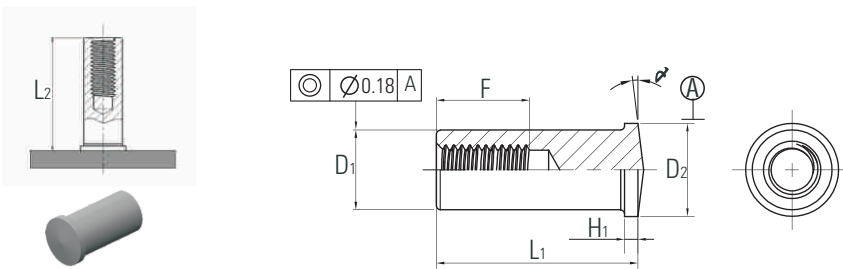


PART NUMBER DESIGNATION								
IT	-	M4	-	12	-	CU		
IT	-	S	-	M5	-	12	-	X
Type	Material Code	Thread Code	Length Code	Finish Code				

All dimensions are in millimeters.

METRIC	Thread Size	Type		Thread Code	Length "L1" ± 0.4										F min	H1 ± 0.3	∅ ± -1°	D1 ± 0.1	D2 ± 0.2	C ± 0.08	A ± 0.05
		Fastener Material																			
		Carbon Steel	Stainless Steel																		
M3x0.5	IT	ITS	M3	8.0	10.0	12.0	14.0	-	-	-	-	5.0	1.0	3°	5.0	6.5	0.75	0.80			
M4x0.7	IT	ITS	M4	8.0	10.0	12.0	14.0	16.0	18.0	20.0	-	6.0	1.0		6.0	7.5		0.80			
M5x0.8	IT	ITS	M5	-	10.0	12.0	14.0	16.0	18.0	20.0	25.0	7.5	1.1		7.1	9.0		0.80			



PART NUMBER DESIGNATION								
IS	-	M5	-	16	-	CU		
IS	-	S	-	M5	-	16	-	X
Type	Material Code	Thread Code	Length Code	Finish Code				

All dimensions are in millimeters.

METRIC	Thread Size	Type		Thread Code	Length "L1" ± 0.4										H1 ± 0.3	∅ ± -1°	D1 ± 0.1	D2 ± 0.2
		Fastener Material																
		Carbon Steel	Stainless Steel															
M3x0.5	IS	ISS	M3	Length before welding L1	8	10	12	14	16	-	-	-	1.0	7°	5	6.0		
				Thread Depth F min	5					-	-	-						
M4x0.7	IS	ISS	M4	Length before welding L1	8	10	12	14	16	18	20	-	1.0	6	7.0			
				Thread Depth F min	5			6			-							
M5x0.8	IS	ISS	M5	Length before welding L1	-	10	12	14	16	18	20	-	1.1	7.1	9.0			
				Length before welding L1	-	6			10			-						
M6x1.0	IS	ISS	M6	Length before welding L1	-	-	-	14	16	18	20	25	1.1	8	9.0			
				Thread Depth F min	-	-	-	10			-							

(1) Length after welding depends on length before welding and the weld energy.