

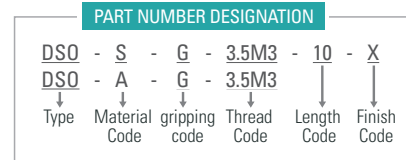
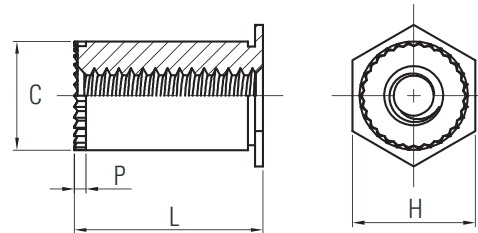
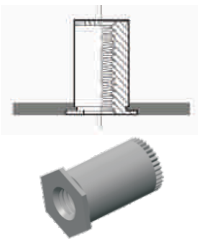
All dimensions are in inches.

UNIFIED	Thread Size	Type		Thread Code	Length Code	Sheet Thickness	Hole Size In Sheet +.003/ -.000	C max	E Nom	Length L (1) +.002 -.005	Min. Dist. Hole To Edge
		Steel	Stainless Steel								
	.112-40 (#4-40)	DDSO	DDSO S	440	250	.037-.250	.166	.165	.194	.250	.126
					275					.275	

All dimensions are in millimeters.

METRIC	Thread Size x Pitch	Type		Thread Code	Length Code	Sheet Thickness	Hole Size In Sheet +0.08	C max	E Nom	Length L (1) +0.05 -0.13	Min. Dist. Hole To Edge
		Steel	Stainless Steel								
	M3x0.5	DDSO	DDSO S	M3	6.35	0.94-6.35	4.22	4.20	4.92	6.35	3.2
					7.0					7.00	

(1) Available in other lengths on special order.



All dimensions are in inches.

UNIFIED	Thread Size	Type		Thread Code	Length "L" +.010 - .000 ⁽²⁾ (Length Code is in 32nds of an inch)						Min. Sheet Thickness	Hole Size In Sheet +.003/ -.000	C +.0/ -.005	H +/--.008	P Nom.	Min. Dist. Hole To Edge	
		Steel	Stainless Steel		.125	.187	.250	.312	.375	.437							.500
	.112-40 (#4-40)	DSOSG	DSOAG	6440	4	6	8	10	12	14	16	.040	.213	.212	.250	.030	.270
					8	10	12	14	16								
	.138-32 (#6-32)	DSOSG	DSOAG	8632	4	6	8	10	12	14	16	.050	.281	.280	.312	.030	.310
					8	10	12	14	16								

All dimensions are in millimeters.

METRIC	Thread Size x Pitch	Type		Thread Code	Length "L" +0.25 ⁽²⁾ (Length Code is in millimeters)						Min. Sheet Thickness	Hole Size In Sheet +0.08/ -0.0	C -0.13	H ±0.08	P Nom.	Min. Dist. Hole To Edge
		Steel	Stainless Steel		3	4	6	8	10	12						
	M3x0.5	DSOSG	DSOAG	3.5M3	3	4	6	8	10	12	1.0	5.4	5.39	6.4	0.76	6.8

(1) For special lengths greater than .500" / 12 mm, Types DSOSG and DSOAG are blind threaded.