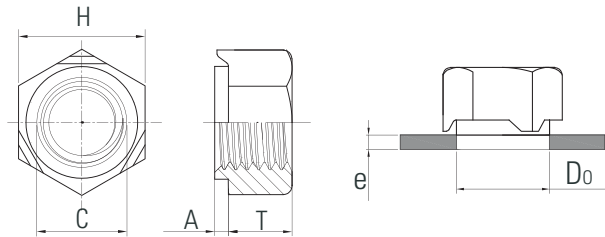


PART NUMBER DESIGNATION

DSWN - M6 - CU
 DSWN - S - M6 - X
 ↓ ↓ ↓ ↓
 Type and Material Code Thread Code Finish Code

All dimensions are in millimeters.

METRIC	Thread Size	Type		Width Across Flat S Max		Do		T		A		Sheet Thickness e	
		Carbon Steel	Stainless Steel	Min	Max	Min	Max	Min	Max	Min	Max	Min	Max
		M4x0.7	SWN	SWNS	6.64	7.0	6.0	6.08	3.2	3.5	0.5	0.7	0.75
M5x0.8	SWN	SWNS	7.64	8.0	7.0	7.09	3.9	4.2	0.7	0.9	0.88	3.5	
M6x1.0	SWN	SWNS	9.64	10.0	8.0	8.09	4.7	5.0	0.7	0.9	0.88	4.0	
M8x1.25	SWN	SWNS	12.57	13.0	10.5	10.61	6.14	6.5	0.9	1.1	1.0	4.5	
M10x1.5	SWN	SWNS	15.57	16.0	12.5	12.61	7.64	8.0	1.1	1.3	1.25	5.0	
M12x1.75	SWN	SWNS	17.57	18.0	14.8	14.91	9.14	9.5	1.3	1.5	1.5	5.0	



PART NUMBER DESIGNATION

HWN - M6 - CU
 HWN - S - M6 - X
 ↓ ↓ ↓ ↓
 Type and Material Code Thread Code Finish Code

All dimensions are in millimeters.

METRIC	Thread Size	Type		Width Across Flat H Max		Do		T		A		C		Sheet Thickness e	
		Carbon Steel	Stainless Steel	Min	Max	Min	Max	Min	Max	Min	Max	Min	Max	Min	Max
		M4x0.7	HWN	HWNS	8.78	9.0	6.0	6.08	3.2	3.5	0.55	0.65	5.89	5.97	0.75
M5x0.8	HWN	HWNS	9.78	10.0	7.0	7.09	3.7	4.0	0.60	0.70	6.87	6.96	0.88	3.50	
M6x1.0	HWN	HWNS	10.73	11.0	8.0	8.09	4.7	5.0	0.60	0.75	7.87	7.96	0.88	4.00	
M8x1.25	HWN	HWNS	13.73	14.0	10.5	10.61	6.1	6.5	0.75	0.90	10.34	10.45	1.00	4.50	
M10x1.5	HWN	HWNS	16.73	17.0	12.5	12.61	7.6	8.0	0.95	1.15	12.34	12.45	1.25	5.00	
M12x1.75	HWN	HWNS	18.67	19.0	14.8	14.91	9.6	10.0	1.20	1.40	14.64	14.75	1.50	5.00	