

PART NUMBER DESIGNATION				
DB	-	M3	-	2 - ZU
DB	-	S	-	M3 - 2 - X
Type	Material Code	Thread Code	Shank Code	Finish Code

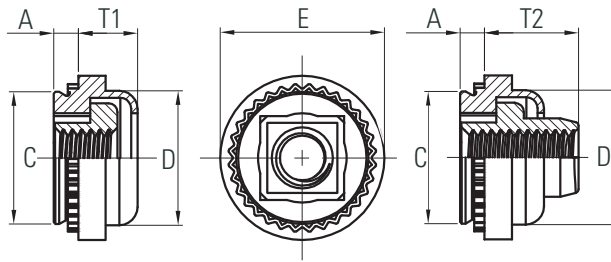
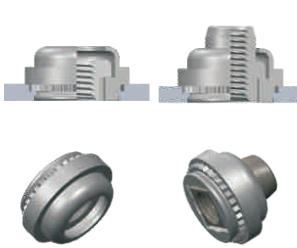
All dimensions are in inches.

UNIFIED	Thread Size	Type		Thread Code	Shank Code	A Max.	Min. Sheet Thickness (1)	Hole Size In Sheet $+\frac{.003}{-.000}$	B Max.	C Max.	E $\pm .010$	F Min.	L Max.	T $\pm .010$	Min. Dist. Hole To Edge (2)
		Fastener Material													
		Carbon Steel	Stainless Steel												
.112-40 (#4-40)	DB	DBS	440	1	.038	.040	.166	.150	.165	.250	.210	.335	.380	.19	
				2	.054	.056									
.138-32 (#6-32)	DB	DBS	632	1	.038	.040	.1875	.169	.187	.280	.230	.335	.380	.22	
				2	.054	.056									
.164-32 (#8-32)	DB	DBS	832	1	.038	.040	.213	.204	.212	.310	.280	.385	.440	.27	
				2	.054	.056									
.190-32 (#10-32)	DB	DBS	032	1	.038	.040	.250	.235	.249	.340	.280	.385	.440	.28	
				2	.054	.056									
.250-20 (1/4-20)	DB	DBS	0420	1	.054	.056	.344	.305	.343	.430	.310	.500	.560	.34	
				2	.087	.090									

All dimensions are in millimeters.

METRIC	Thread Size	Type		Thread Code	Shank Code	A Max.	Min. Sheet Thickness (1)	Hole Size In Sheet $+0.08$	B Max.	C Max.	E ± 0.25	F Min.	L Max.	T ± 0.25	Min. Dist. Hole To Edge (2)
		Fastener Material													
		Carbon Steel	Stainless Steel												
M3x0.5	DB	DBS	M3	1	0.97	1.0	4.22	3.84	4.2	6.35	5.3	8.5	9.6	4.8	
				2	1.38	1.4									
M4x0.7	DB	DBS	M4	1	0.97	1.0	5.41	5.2	5.38	7.95	7.1	9.8	11.2	6.9	
				2	1.38	1.4									
M5x0.8	DB	DBS	M5	1	0.97	1.0	6.35	6.02	6.33	8.75	7.1	9.8	11.2	7.1	
				2	1.38	1.4									
M6x1.0	DB	DBS	M6	1	1.38	1.4	8.75	7.8	8.73	11.1	7.8	12.7	14.3	8.6	
				2	2.21	2.29									

- (1) For maximum performance, we recommend that you use the maximum shank length for your sheet thickness.
- (2) To minimize sheet distortion and maximize product performance, use a centerline-to-edge value greater or equal to the value specified.



PART NUMBER DESIGNATION				
DA	- C	- M3	- 1	- X
DA	- S	- M3	- 1	- ZU
DA	- 4	- M3	- 1	- X
↓	↓	↓	↓	↓
Type	Material Code	Thread Code	Shank Code	Finish Code

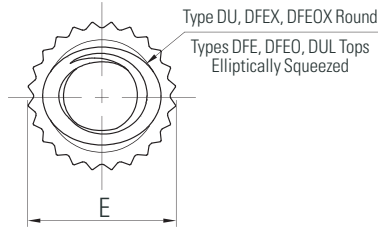
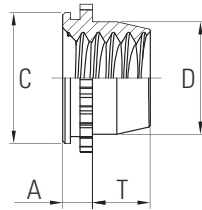
All dimensions are in inches.

UNIFIED	Thread Size	Non-Locking			Self-Locking			Thread Code	Shank Code	A Max.	Min. Sheet Thickness (1)	Hole Size In Sheet +.003/- .000	C Max.	D Max.	E ± .015	T1 Max.	T2 Max.	Min. Dist. Hole To Edge
		Fastener Material			Fastener Material													
		Carbon Steel	300 Series Stainless	400 Series Stainless	Carbon Steel	300 Series Stainless	400 Series Stainless											
.112-40 (#4-40)	DAS	DAC	DA4	DLAS	DLAC	DLA4	440	1	.038	.038	.290	.289	.290	.360	.130	.190	.30	
								2 ⁽¹⁾	.054	.054								
.138-32 (#6-32)	DAS	DAC	DA4	DLAS	DLAC	DLA4	632	1	.038	.038	.328	.327	.335	.390	.130	.200	.32	
								2 ⁽¹⁾	.054	.054								
.164-32 (#8-32)	DAS	DAC	DA4	DLAS	DLAC	DLA4	832	1	.038	.038	.368	.367	.365	.440	.130	.210	.34	
								2 ⁽¹⁾	.054	.054								
.190-24 (#10-24)	DAS	DAC	-	DLAS	DLAC	-	024	1	.038	.038	.406	.405	.405	.470	.170	.270	.36	
								2	.054	.054								
.190-32 (#10-32)	DAS	DAC	DA4	DLAS	DLAC	DLA4	032	1	.038	.038	.406	.405	.405	.470	.170	.270	.36	
								2 ⁽¹⁾	.054	.054								
.250-20 (1/4-20)	DAS	DAC	-	DLAS	DLAC	-	0420	2	.054	.054	.515	.514	.510	.600	.210	.310	.42	
								2	.054	.054								
.250-28 (1/4-28)	DAS	DAC	-	DLAS	DLAC	-	0428	2	.054	.054	.515	.514	.510	.600	.210	.310	.42	
								2	.054	.054								

All dimensions are in millimeters.

METRIC	Thread Size	Non-Locking			Self-Locking			Thread Code	Shank Code	A Max.	Min. Sheet Thickness (1)	Hole Size In Sheet +0.08	C Max.	D Max.	E ± 0.38	T1 Max.	T2 Max.	Min. Dist. Hole To Edge
		Fastener Material			Fastener Material													
		Carbon Steel	300 Series Stainless	400 Series Stainless	Carbon Steel	300 Series Stainless	400 Series Stainless											
M3x0.5	DAS	DAC	DA4	DLAS	DLAC	DLA4	M3	1	0.97	1.0	7.37	7.35	7.37	9.14	3.31	4.83	7.62	
								2 ⁽¹⁾	1.38	1.4								
M4x0.7	DAS	DAC	DA4	DLAS	DLAC	DLA4	M4	1	0.97	1.0	9.35	9.33	9.28	11.18	3.31	5.34	8.64	
								2 ⁽¹⁾	1.38	1.4								
M5x0.8	DAS	DAC	DA4	DLAS	DLAC	DLA4	M5	1	0.97	1.0	10.31	10.29	10.29	11.94	4.32	6.86	9.14	
								2 ⁽¹⁾	1.38	1.4								
M6x1.0	DAS	DAC	-	DLAS	DLAC	-	M6	2	1.38	1.4	13.08	13.06	12.96	15.24	5.34	7.88	10.67	
								2	1.38	1.4								

(1) This shank code not available for Type DA4 and DLA4.



PART NUMBER DESIGNATION

DFE	-	M3	-	MD
DFEO	-	M3	-	MD
DUL	-	M3	-	1 - MD
	↓	Thread Code	↓	Shank Code
			↓	Finish Code

All dimensions are in inches.

UNIFIED	Thread Size	Type		Shank Code	Shank Code (2)	A Max.	Sheet Thickness	Hole Size In Sheet +.003 -.000	C +.000 -.005	D Max.	E ± .005	T +.015 -.000	Min. Dist. Hole To Edge (2)	Max. Hole In Attached Parts
		Non-Locking (1)	Self-Locking											
	.060-80 (#0-80)	DU	DUL	080	0	.020	.019-.022	.110	.1095	.076	.125	.050	.09	.080
	.073-64 (#1-64)	DU	DUL	164	0	.020	.019-.022	.110	.1095	.090	.125	.050	.09	.093
	.086-56 (#2-56)	DU	DUL	256	0 1	.020	.019-.022 .030-.036	.144	.1435	.106	.160	.065	.11	.106
	.112-40 (#4-40)	DFEOX	DFEO	440		.040	.039-.045	.172	.171	.145	.192	.065	.14	.132
		DFEX	DFE				.059-.070							
	.138-32 (#6-32)	DFEOX	DFEO	632		.040	.039-.045	.213	.212	.180	.244	.075	.17	.158
		DFEX	DFE				.059-.070							
	.164-32 (#8-32)	DFEOX	DFEO	832		.040	.039-.045	.290	.289	.215	.322	.090	.20	.184
		DFEX	DFE				.059-.070							
	.190-32 (#10-32)	DFEOX	DFEO	032		.040	.039-.045	.290	.289	.245	.322	.110	.20	.210
		DFEX	DFE				.059-.070							
	1/4-20	DFEX	DFE	0420		.060	.059-.070	.344	.343	.318	.384	.120	.28	.270
	1/4-28													

All dimensions are in millimeters.

METRIC	Thread Size	Type		Shank Code	Shank Code (2)	A Max.	Sheet Thickness	Hole Size In Sheet +0.08	C -0.13	D Max.	E ± 0.13	T +0.4	Min. Dist. Hole To Edge (2)	Max. Hole In Attached Parts
		Non-Locking (3)	Self-Locking											
	M2x0.4	DU	DUL	M2	1	0.76	0.76-0.91	3.61	3.6	2.5	4.07	1.65	2.8	2.5
	M3x0.5	DFEOX	DFEO	M3		1.02	0.99-1.14	4.39	4.37	3.96	4.88	1.9	3.6	3.5
		DFEX	DFE				1.53							
	M4x0.7	DFEOX	DFEO	M4		1.02	0.99-1.14	7.39	7.37	5.23	8.17	2.55	5.2	4.5
		DFEX	DFE				1.53							
	M5x0.8	DFEOX	DFEO	M5		1.02	0.99-1.14	7.39	7.37	6.48	8.17	3.05	5.2	5.5
		DFEX	DFE				1.53							
	M6x1.0	DFEX	DFE	M6		1.53	1.5-1.78	8.74	8.72	7.72	9.74	3.3	7.1	6.5

- (1) 2B Go Gauge may stop at barrel end but class 3A screw will pass thru with finger torque
- (2) Shank code applicable only to Types U and UL fasteners
- (3) 6H Gauge may stop at barrel but 4h screw will pass thru with finger torque